

**2022 Rice Lake, Barron County Curly-leaf Pondweed (CLP) and Navigation Lanes
Harvesting Plan – LEAPS 3/30/2022**

| 2022 Rice Lake, Barron County Summer Navigation Lanes Harvesting Program March 30, 2022 | | | |
|--|--------------------------|-------------------------|---------------------------|
| <i>Color</i> | <i>Width (ft)</i> | <i>Miles</i> | <i>Acres</i> |
| Yellow | 20 | 2.3 | 5.58 |
| Green | 40 | 0.36 | 1.75 |
| Red | 60 | 3.49 | 25.38 |
| Orange | 80 | 2.51 | 24.35 |
| Blue | 160 | 0.45 | 8.73 |
| | | 9.11 | 65.79 |
| | | | |
| 2022 Expected CLP Harvesting Plan March 30, 2022 | | | |
| <i>Color</i> | <i>Year</i> | <i># of Beds</i> | <i>Total Acres</i> |
| White/gray | 2022 | 20 | 112 |

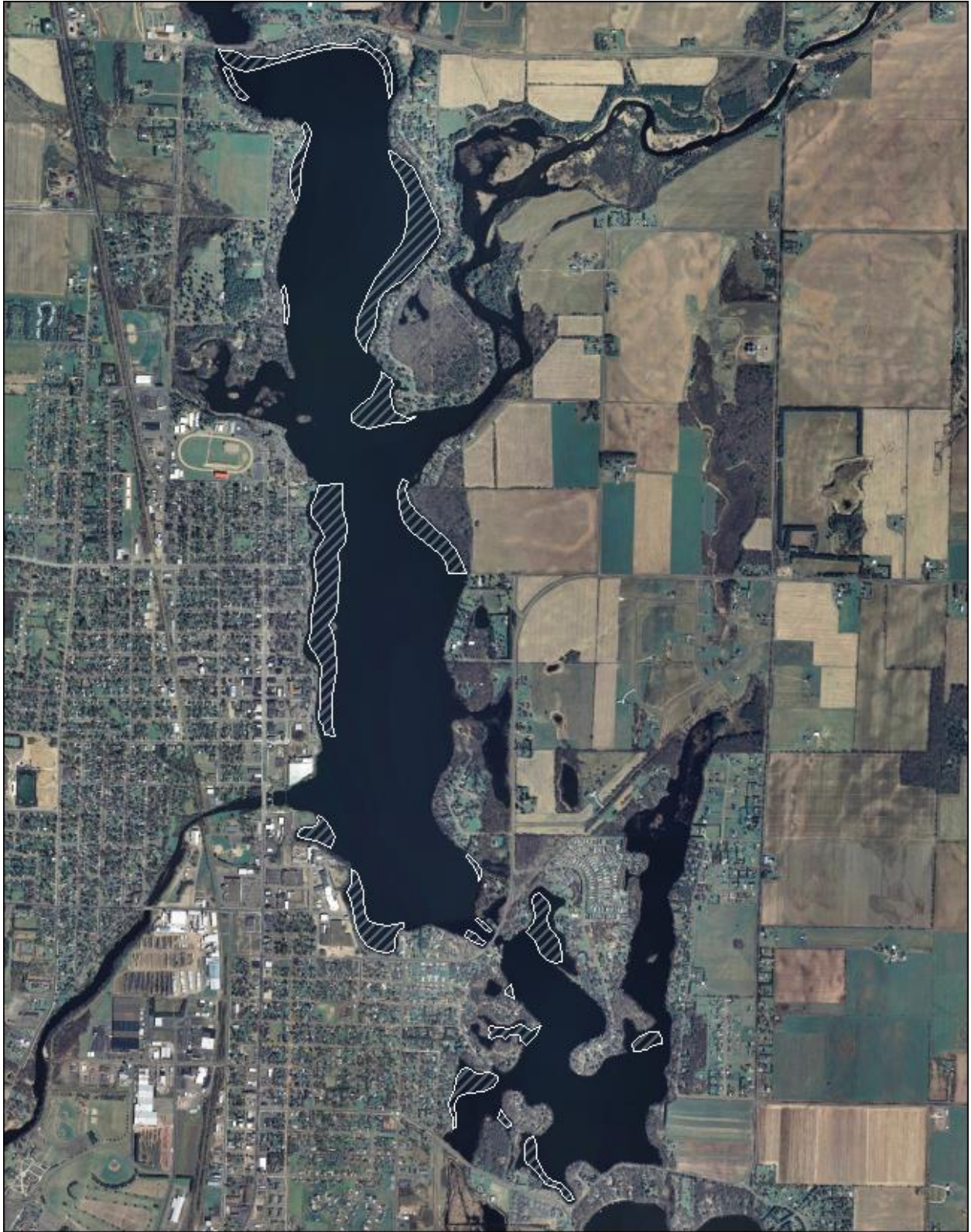


Figure 1: 2022 CLP Harvesting Areas

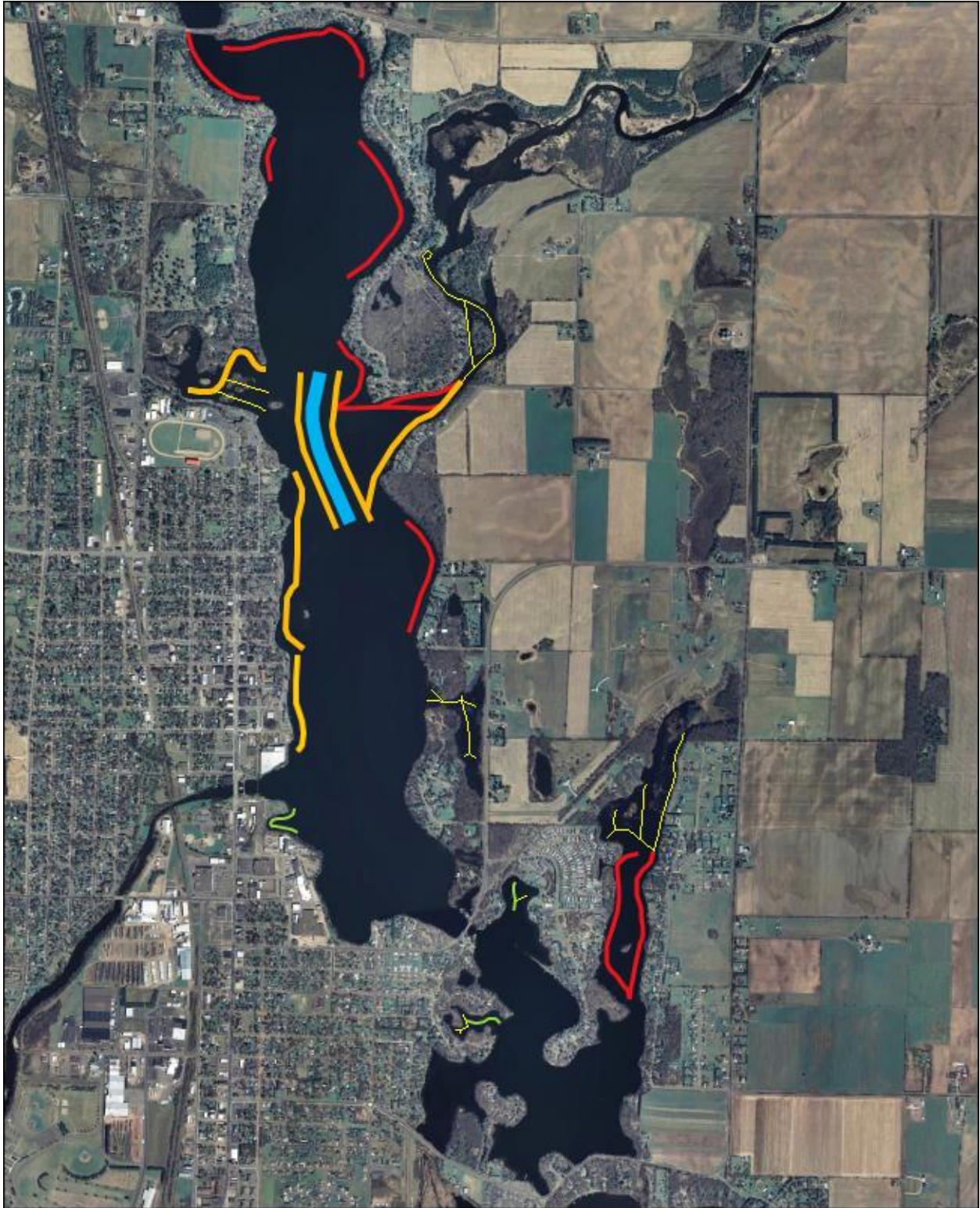


Figure 2: 2022 Summer Navigation Lanes