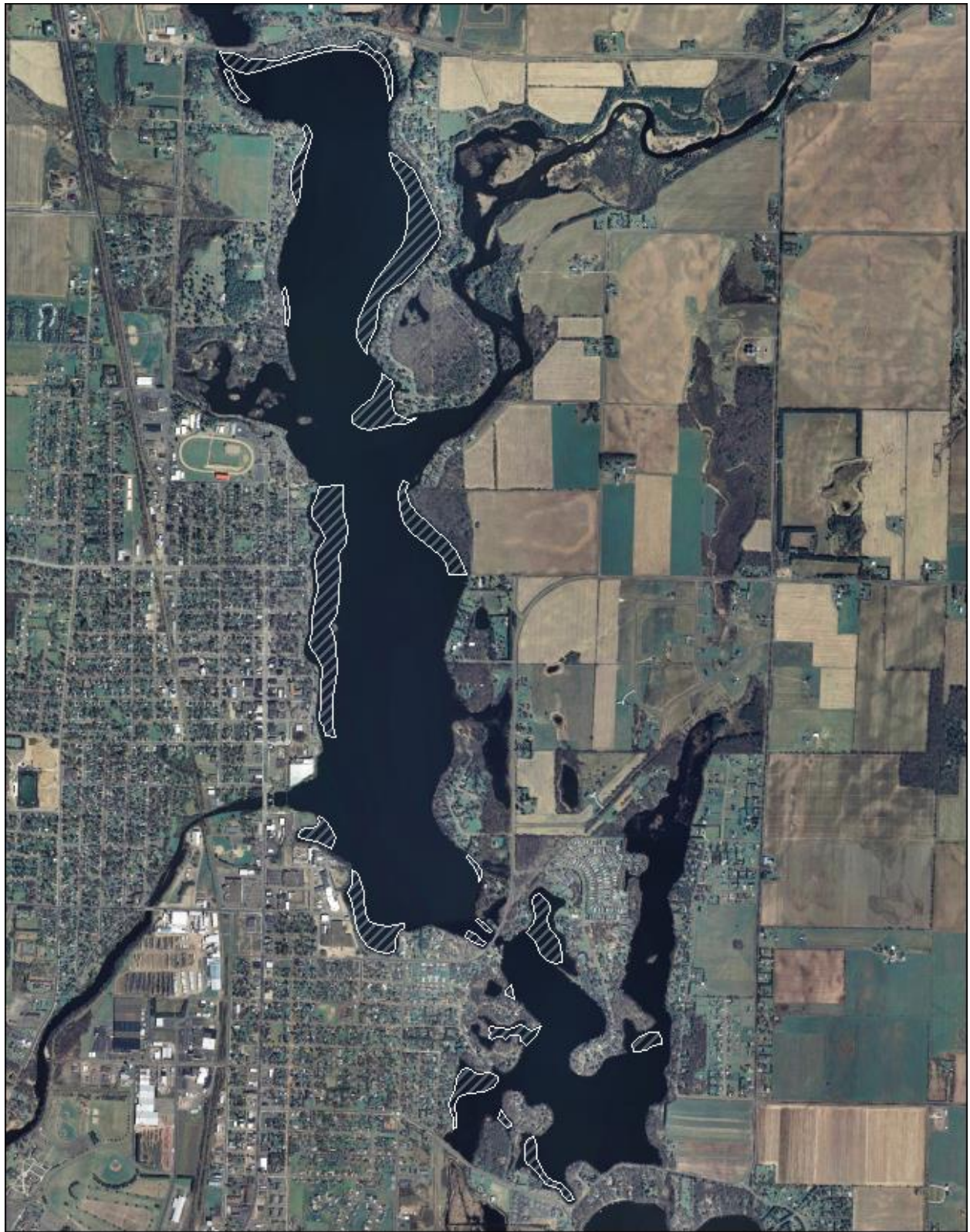
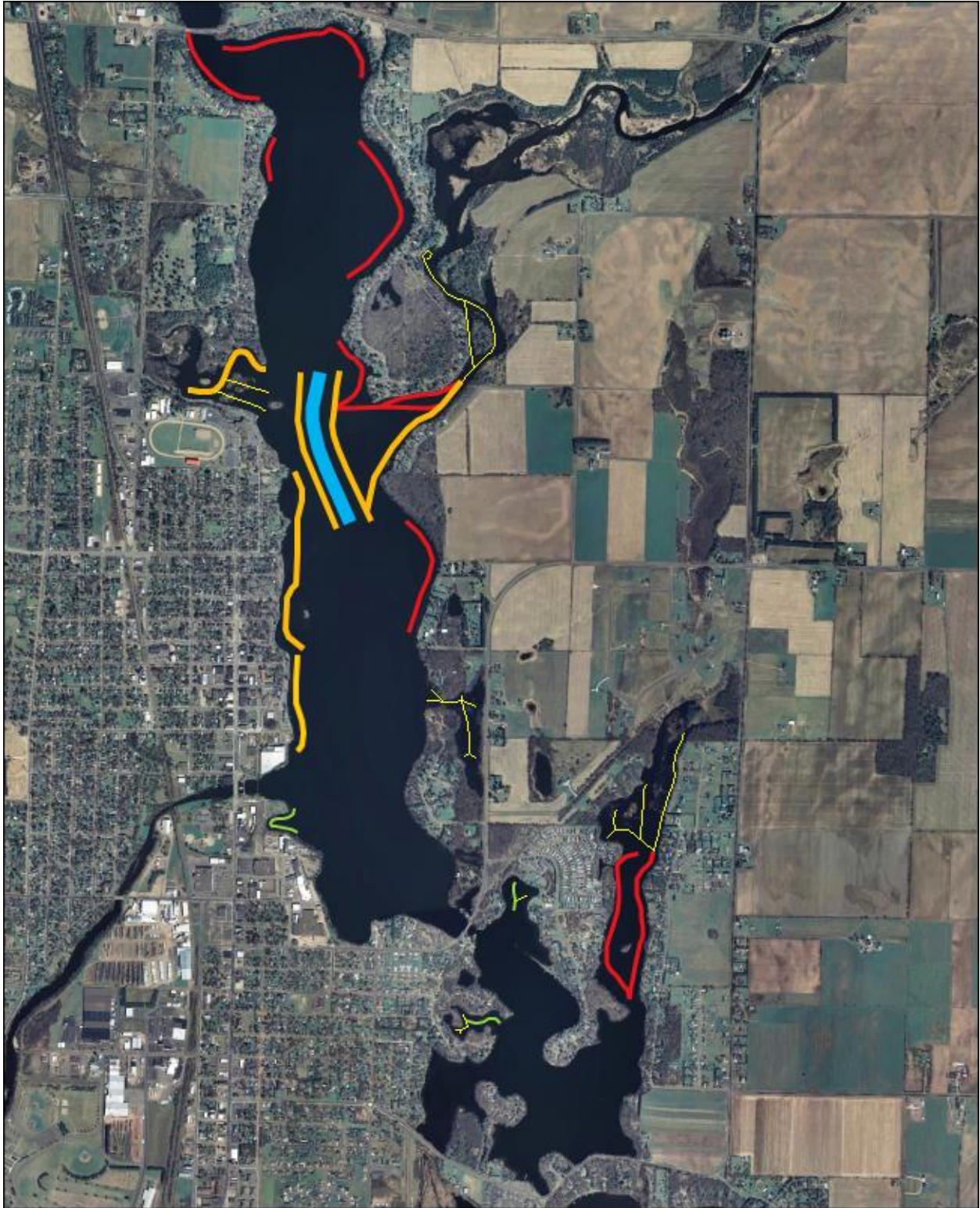


**2023 Rice Lake, Barron County Curly-leaf Pondweed (CLP) and Navigation  
Lanes Harvesting Plan – LEAPS 3/27/2023**

<b>2023 Rice Lake, Barron County Summer Navigation Lanes Harvesting Program March 27, 2023</b>			
<i><b>Color</b></i>	<i><b>Width (ft)</b></i>	<i><b>Miles</b></i>	<i><b>Acres</b></i>
Yellow	20	2.3	5.58
Green	40	0.36	1.75
Red	60	3.49	25.38
Orange	80	2.51	24.35
Blue	160	0.45	8.73
		9.11	65.79
<b>2022 Expected CLP Harvesting Plan March 30, 2022</b>			
<i><b>Color</b></i>	<i><b>Year</b></i>	<i><b># of Beds</b></i>	<i><b>Total Acres</b></i>
White/gray	2022	20	112



**Figure 1: 2023 CLP Harvesting Areas**



**Figure 2: 2023 Summer Navigation Lanes**